

12-7099-1108

Downlight Recessed Square



Description:

Lite Tech 12-7099 and 12-1108 series are square decorative, high aesthetics, Downlight designed for compact fluorescent lamps, suitable for recessed mounting in all types of false ceilings, equipped with aluminium reflector, easy and reliable clamp system / adjustable brackets for easy installation, and heat tempered glass diffuser.

Applications: Offices, schools, hospitals, shops, lobbies, reception areas.

Technical Specifications & Features:

Housing: Body and control gear box are made of galvanized steel sheets, flat trim (Recessing frame) and diffuser frame are made from die cast aluminium alloy, pre-treated (degreasing & phosphate process), white epoxy polyester powder coated, equipped with adjustable brackets for easy and reliable installation. Diffuser frame is snap fit on the trim and held firmly by means of stainless steel springs. Diffuser frame is connected to the trim by means of stainless steel wire for easy hanging and suspension during maintenance.

Light Controller : Reflector made of high purity anodized aluminium, and a choice of two diffusers (frosted heat tempered glass, clear heat tempered glass).

Mounting: Recessed mounted, suitable for all types of false ceilings, equipped with easy and reliable adjustable brackets.

Light source: Compact fluorescent lamps non-integrated (13 watts, 18 watts, 26 watts, 42 watt). Compact fluorescent lamps integrated (23 watt).

Control Gear: Pre-wired up to the terminal block using heat resistant wires, available in High frequency electronic ballast, or electromagnetic ballast, (Dimmable & DALI gears are available upon request).

12-7099: Integral control gear box.

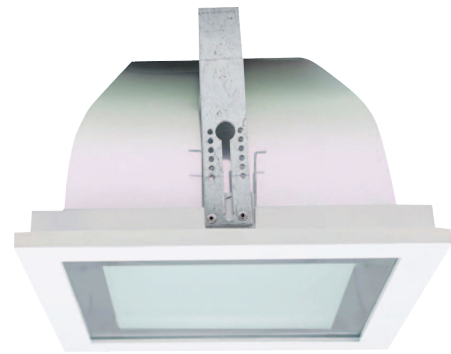
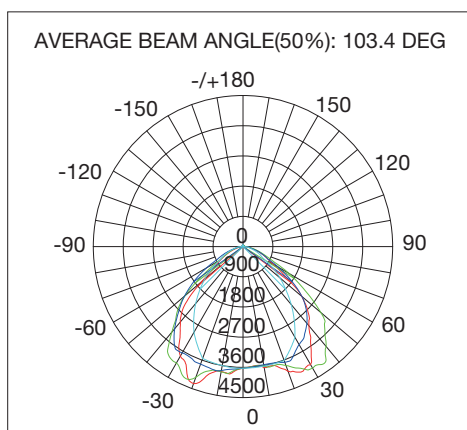
12-1108: Control gear in separate box.

Voltage & Frequency: 220V-240V, 50-60HZ (other voltages available upon request).

Optional Accessories (available upon request)

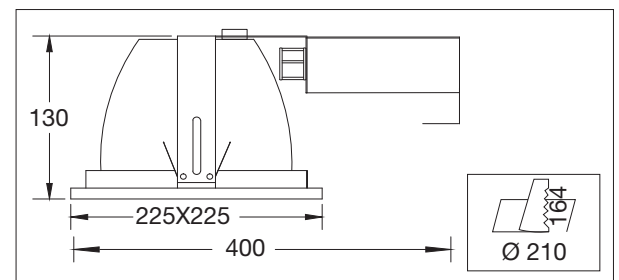
- 1- Emergency Kit: 3 hours emergency kit for 1 lamp, maintained.
- 2- Fuse Terminal.
- 3- Capacitor (power factor correction capacitor, only with conventional ballast).

Polar Diagram: 2X26W HFP

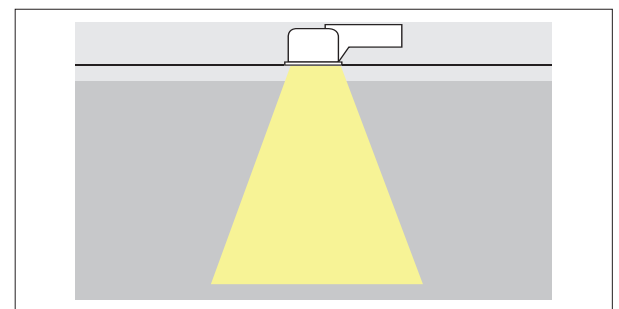
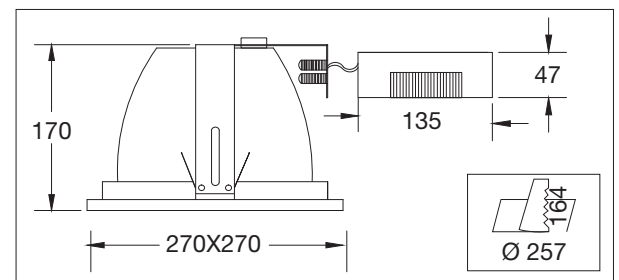


Schematic

12-7099



12-1108



1m	267.2,500.6lx	201.93cm
2.2m	55.21,103.4lx	444.24cm
3m	29.69,55.63lx	605.78cm
4m	16.70,31.29lx	807.71cm
5m	10.69,20.03lx	1009.64cm


Ordering Guide

Model	No. Of Lamps	Wattage	Gear	IP	Accessories	Trim Color	Diffuser
12-7099-001	2	PL-C 18W G24 (d-2/q-2)	1- Magnetic 220V 50 HZ	IP44	EL3-3 H emergency kit	Default Color - White	FFG - Fully Forsted Glass
12-7099-002	2	PL-C 26W G24 (d-3/q-3)	2- Magnetic 230V 50 HZ				
12-7099-003	1	PL-T 42W GX24q-4	3- Magnetic 240V 50 HZ				
12-1108-001	2	PL-C 18W G24 (d-2/q-2)	4- Magnetic 220V 60 Hz				
12-1108-002	1	PL-C 26W G24 (d-3/q-3)	5- High Frequency Ballast		C- Capacitor	CR - Chrome	CG - Clear Glass
12-1108-003	2	PL-C 26W G24 (d-3/q-3)	6- High Frequency economy Ballast				
12-1108-004	1	PL-T 42W GX24q-4	7- High Frequency DALI Ballast				
12-1108-005	2	PL-T 42W GX24q-4	8- High Frequency Dimmable Ballast		FT- Fuse Terminal	BR - Brass	CG - Clear Glass
* 12-7099-004	1	PL-E 23W E27					
* 12-1108-006	1	PL-E 23W E27				NI - Nickel	

* Note: Gear Accessories EL3 & C are not applicable for CFL-I (E27) lamps.

12-7099-001	2 X PL-C 18W	/ 5 /	IP44	/EL3 /	CG	
Model Number	No. of Lamps	Lamp Wattage	Gear	IP Rating	Accessories	Diffuser

Lite Tech recessed mounted downlight 12-7099 for 2 X 18W , high frequency ballast 220-240 V 50-60 HZ, IP44 , equipped with 3 hours emergency kit, trim white color, clear glass cover.

Data subject to change without notice.